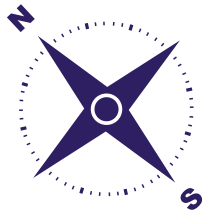


Haymarket

Lower Ground Floor

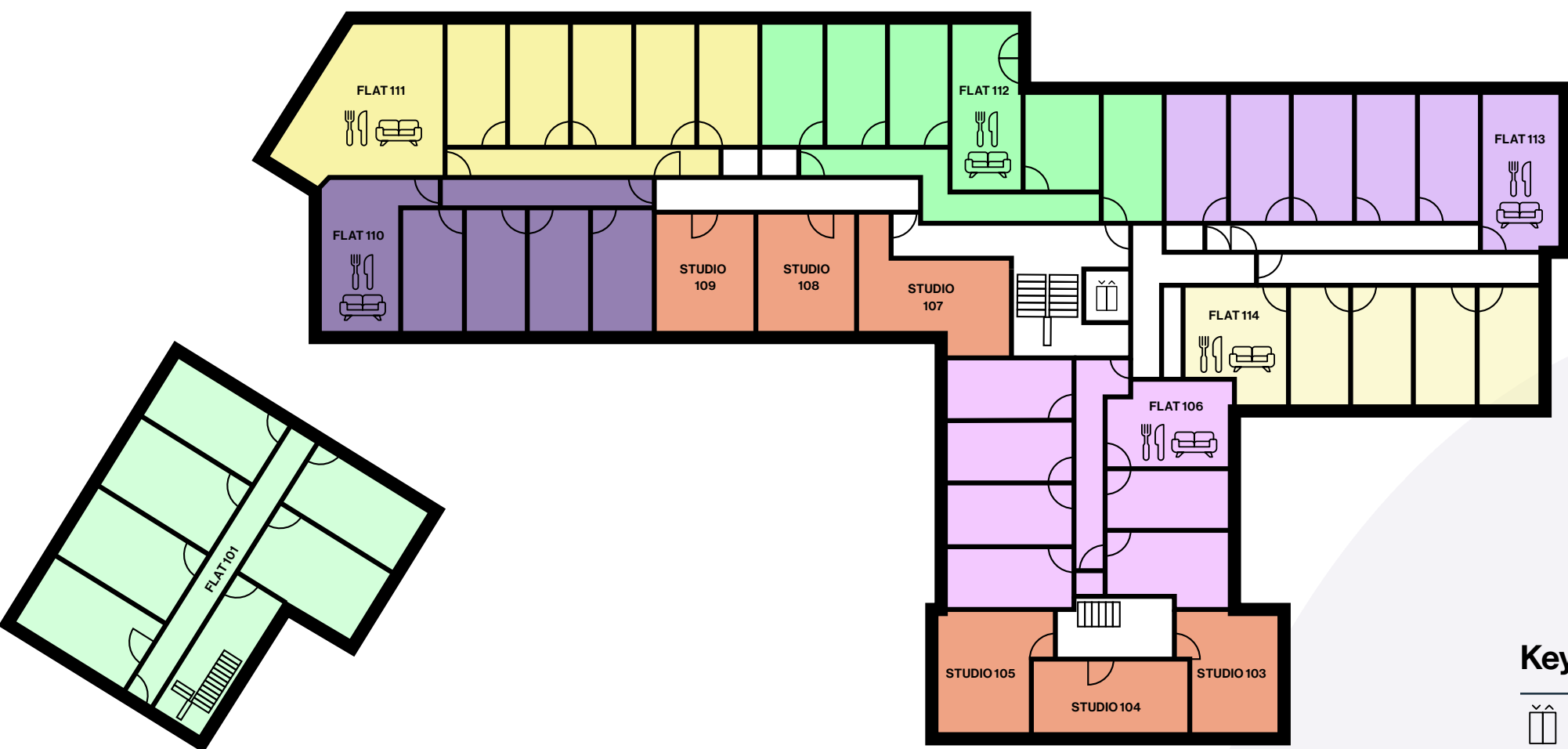
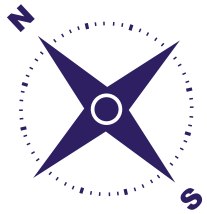
Key

| | | |
|-----------------|--------------|----------|
| Lift / elevator | Studio flats | Flat B11 |
| Kitchen | Flat B01 | Flat B12 |
| Lounge | Flat B02 | Flat B13 |
| | Flat B10 | |



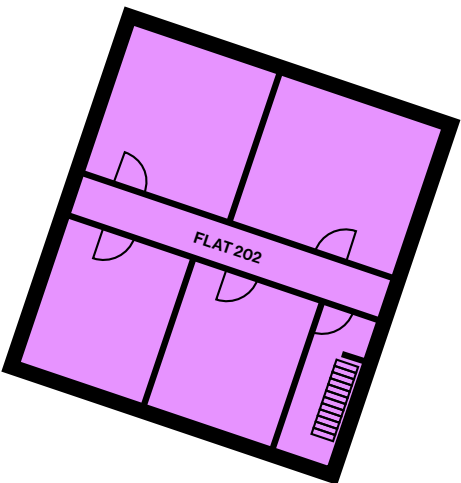
Key

| | |
|-----------------|----------|
| Lift / elevator | Flat G10 |
| Kitchen | Flat G11 |
| Lounge | Flat G12 |
| Studio flats | Flat G13 |
| Flat G01 | Flat G14 |
| Flat G02 | |



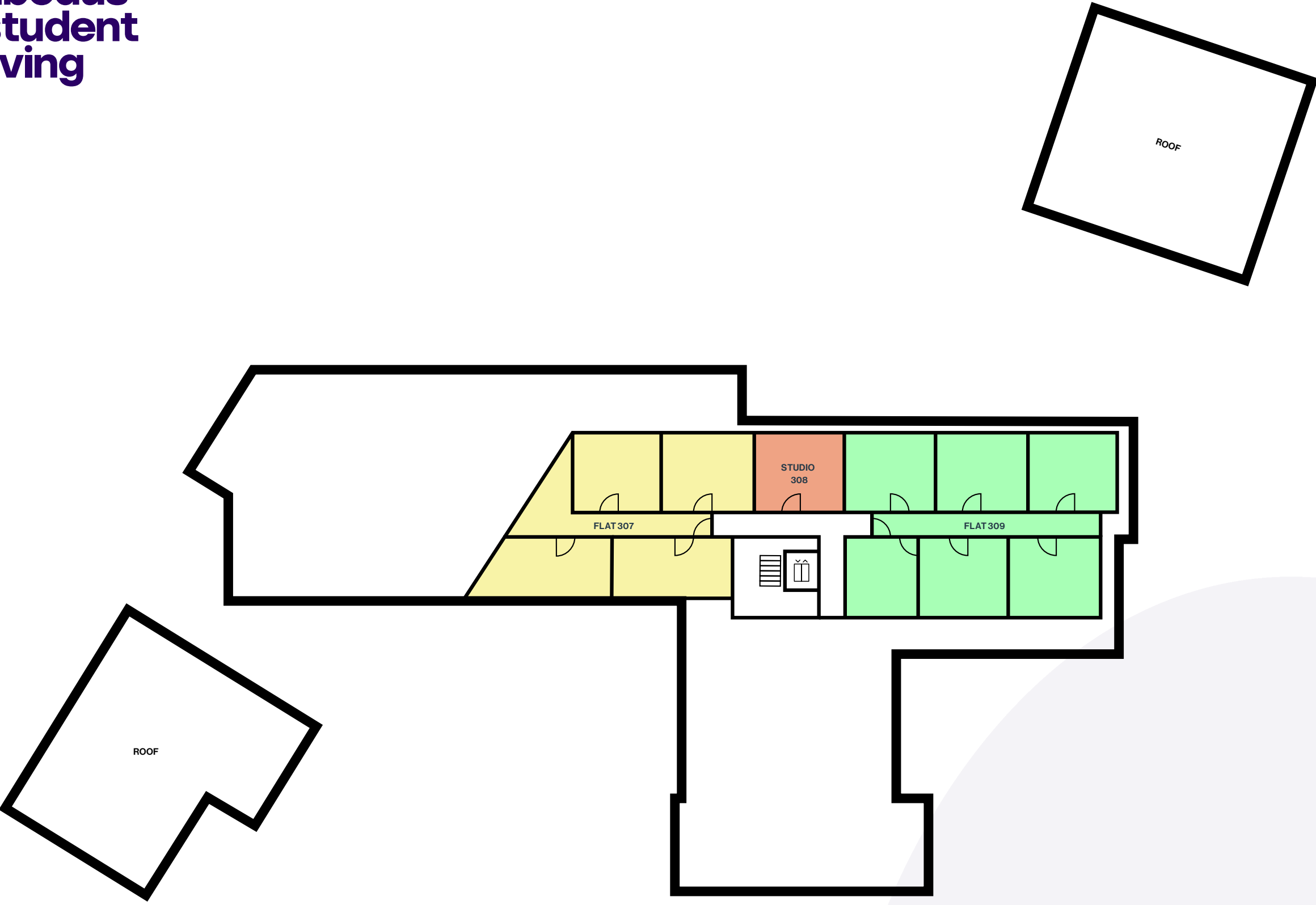
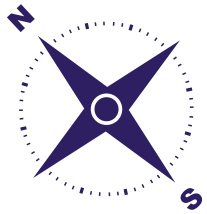
Key

| | |
|-----------------|----------|
| Lift / elevator | Flat 106 |
| Kitchen | Flat 110 |
| Lounge | Flat 111 |
| Studio flats | Flat 112 |
| Flat 101 | Flat 113 |
| Flat 102 | Flat 114 |



Key





| | | | |
|--|-----------------|--|----------|
| | Lift / elevator | | Flat 210 |
| | Kitchen | | Flat 211 |
| | Lounge | | Flat 212 |
| | Studio flats | | Flat 213 |
| | Flat 202 | | Flat 214 |

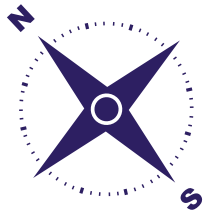


Haymarket

Third Floor

Key

| | |
|---|--|
|  Lift / elevator |  Flat 307 |
|  Studio flat |  Flat 309 |



Haymarket

Lower Ground Floor

Key

| | | |
|-----------------|--------------|----------|
| Lift / elevator | Studio flats | Flat B11 |
| Kitchen | Flat B01 | Flat B12 |
| Lounge | Flat B02 | Flat B13 |
| | Flat B10 | |